

ASBESTOS, just the beginning!

Energy Renovation CCMI  
19-12-2018

Ir. Johan D'Hooghe  
vice-president  
International Committee  
EDA

# Best practice = Selective Demolition Pre-Demolition audit + Decontamination + Dismantling + Demolition



# Energy Renovation = Pre-Demolition Audit + Decontamination + Dismantling + Demolition



## Pre-demolition Audit



A good pre-demolition audit should include **qualitative** AND **quantitative** information on **dangerous** AND **non-dangerous** waste fractions.

The contractor needs this information to develop a demolition plan for the project allowing selective demolition.

This is absolutely necessary for reasons of safety, health, environment and maximising the recycling potential.

Asbestos is a key-problem but not the only!

## Decontamination



## This is also decontamination related to energy!



## Future Decontamination ?



## Dismantling



Prior to the final demolition step, all materials that can be removed in advance should be removed separately and if possible, sent to the recycling.

This picture is taken in 2004, the Wool2Loop project hopefully granted in 2018!.



## Dismantling

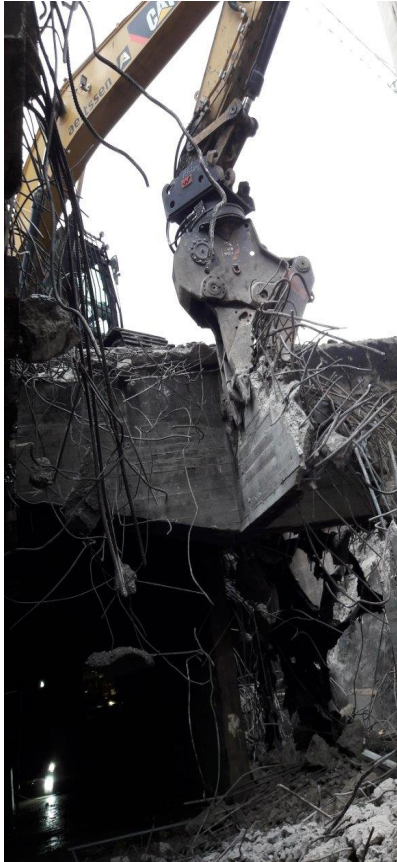


Dismantling is not exclusively for big projects but it's applicable to all kinds of projects, also houses.

It often involves handwork or small machinery (mini-excavators).

# Demolition

Once only the structure remains, the final demolition can start which results in a stock of recyclable bricks, concrete, scrap, ...



## After Demolition



Production of valuable recycled aggregates and/or binded mixtures **WITHOUT** asbestos, PCB, TAR, radioactivity, .....





Asbestos just the beginning,

**but** be sure that it's eliminated at the beginning! Demolition has to be done by professionals!

**THANK  
YOU!**



[www.europeandemolition.org](http://www.europeandemolition.org)  
[info@europeandemolition.org](mailto:info@europeandemolition.org)  
(+32) 280 827 60